

Pharmacogenomics of antihypertensive drugs: Rationale and design of the Pharmacogenomic Evaluation of Antihypertensive Responses (PEAR) study

Julie A. Johnson, PharmD,^{a,b} Eric Boerwinkle, PhD,^c Issam Zineh, PharmD,^{a,b} Arlene B. Chapman, MD,^d Kent Bailey, PhD,^c Rhonda M. Cooper-DeHoff, PharmD, MS,^{a,b} John Gums, PharmD,^{a,b} R. Whit Curry, MD,^b Yan Gong, PhD,^a Amber L. Beitelshes, PharmD, MPH,^a Gary Schwartz, MD,^c and Stephen T. Turner, MD^c
Gainesville, FL; Houston, TX; Atlanta, GA; and Rochester, MN

Background Selection of antihypertensive therapy is often empiric, and use of genetic information to guide drug therapy selection holds future promise.

Trial design The objective of this trial is to identify the genetic determinants of the antihypertensive and adverse metabolic responses to a thiazide diuretic (hydrochlorothiazide), a β -blocker (atenolol), and their combination. This will be accomplished through candidate gene and genome-wide association approaches. Individuals with uncomplicated hypertension (N = 800), with ages 17 and 65 years, are being enrolled. Current antihypertensive therapy is discontinued, and hypertension is confirmed, along with collection of other baseline data. Subjects are then randomized to either hydrochlorothiazide or atenolol, with 1 dose titration step, followed by assessment of response to therapy after at least 6 weeks on the target dose. Those with blood pressure >120/70 mm Hg have the second drug added, with similar dose titration and response assessment procedures. Data collected include home, office, and 24-hour ambulatory blood pressure. Biological samples collected in the fasting state include plasma, serum, DNA (buffy coat), and urine. Epstein-Barr virus transformed lymphocyte cell lines are also being created.

Conclusions Pharmacogenetic-guided therapy holds clinical potential for hypertension, but the literature in the field is limited. This trial will add substantially to our understanding of the genetic determinants of antihypertensive and adverse metabolic responses to 2 commonly used antihypertensive drug classes. (Am Heart J 2009;157:442-9.)

Hypertension is common, affecting approximately 73 million Americans, with an additional 70 million considered to have prehypertension.¹ Serious sequelae of hypertension include stroke, heart failure, ischemic heart disease, and chronic renal failure.

Thiazide diuretics, β -blockers, angiotensin converting enzyme (ACE) inhibitors, angiotensin receptor blockers, and calcium-channel blockers are considered appropriate first-line treatment for hypertension in the United States,² although there is recent debate about the first-line role of diuretics and β -blockers due to their adverse metabolic effects (AMEs).^{3,4} Despite availability of many effective agents, only about 40% of treated hypertensives have

their blood pressure (BP) controlled.^{1,5} Variable drug efficacy may contribute, in part, to poor BP control because numerous studies have shown that any given drug is effective in only 40% to 60% of patients.⁶ Initial therapy is often selected empirically, and BP responses to monotherapy vary widely within ethnic and gender subgroups. The low response rates to any particular antihypertensive drug suggest the current approach to therapy selection and hypertension management is not optimal. The Pharmacogenomic Evaluation of Antihypertensive Responses (PEAR) study seeks to address whether genetic predictors of BP lowering in response to a thiazide diuretic, a β -blocker, or their combination can be identified. A secondary objective is to determine whether genetic predictors of AMEs to each monotherapy or combination therapy can be identified. The variable nature of these responses, previous studies suggesting genetic associations with BP responses, and the heritability of high BP, glucose, and lipids all lend evidence to the hypothesis that antihypertensive and adverse metabolic responses to thiazides and β -blockers may be under some genetic control. Information gained from this study may help individualize selection of antihypertensives in patients with uncomplicated essential hypertension.

From the ^aUniversity of Florida College of Pharmacy and Center for Pharmacogenomics, Gainesville, FL, ^bUniversity of Florida College of Medicine, Gainesville, FL, ^cUniversity of Texas at Houston Center for Human Genetics, Houston, TX, ^dEmory University School of Medicine, Atlanta, GA, and ^eMayo Clinic College of Medicine, Rochester, MN.

This work is funded by the National Institutes of Health (Bethesda, MD; grant U01-GM074492), as part of the Pharmacogenetics Research Network.

Submitted September 2, 2008; accepted November 26, 2008.

Reprint requests: Julie A. Johnson, PharmD, University of Florida, Box 100486, Gainesville, FL 32610-0486.

E-mail: johnson@cop.ufl.edu

0002-8703/\$ - see front matter

© 2009, Mosby, Inc. All rights reserved.

doi:10.1016/j.ahj.2008.11.018

Rationale for PEAR study design

The PEAR study is funded as part of the National Institutes of Health (NIH) Pharmacogenetics Research Network (http://www.pharmgkb.org/network/pharmacogenetics_research_network.jsp) to investigate potential genetic contributors to antihypertensive and AME responses to thiazide diuretics and β -blockers, using both a candidate gene and genome-wide association approach. This broad approach will allow investigation of the contributions from multiple different genes to drug response variability.

Many previous hypertension pharmacogenetic studies have limited analyses to office (ie, clinic) measures of BP response, but PEAR will incorporate both home and 24-hour ambulatory measures as well as office measures of BP response. Evidence suggests office BP is not the optimal BP phenotype for assessing genetic predictors of drug response. Specifically, both ambulatory and home BP have been shown to be superior to office BP in predicting long-term outcomes.^{7,8} Reproducibility for ambulatory and home BP is also better than for office BP.⁹ In addition, we and others have shown a relatively poor correlation between office BP and either ambulatory BP (ABP) or home BP, but good correlations between ambulatory BP and home BP.¹⁰⁻¹² Finally, office BP is associated with a placebo effect, whereas ambulatory and home BPs are not.^{13,14} Therefore, the data suggest the most appropriate BP phenotypes are home and ABPs rather than office BP, and these will be the primary focus in PEAR.

The PEAR study will also address genetic associations with monotherapy and combination therapy in hypertension. Although information on the genetic predictors of BP response in the untreated patient is important, it is increasingly clear that a large percentage of patients will require >1 drug for BP control. It is therefore important to understand whether associations documented between genetic polymorphisms and response to monotherapy are preserved when the drug of interest is added to existing antihypertensive therapy and the PEAR design will allow for such assessments.

Despite their widespread use for hypertension, thiazides and β -blockers are associated with AMEs that are the cause of increasing concern in the clinical community. Specifically, these AMEs have led some to suggest neither drug class should be considered first-line therapy for uncomplicated hypertension.^{3,4} However, only a relatively small portion of the population experiences these AMEs. If genetic contributors to AMEs could be identified a priori, clinicians could choose to avoid these drugs in at-risk individuals. Despite the increasing focus on the AMEs of these drugs, data on genetic contributions to these effects are limited. In PEAR, these adverse metabolic response phenotypes will be assessed at the same time as BP responses, through determination of

specific laboratory measures collected under fasting conditions. The primary end point for AMEs on glucose is the homeostatic model assessment, which incorporates fasting glucose and insulin levels to arrive at a measure of insulin sensitivity and β -cell function. Estimates of insulin resistance/sensitivity and pancreatic β -cell function, in diabetics and nondiabetics, by homeostatic model assessment have been well correlated with invasive “gold standard” methods like euglycemic or hyperglycemic clamping, minimal modeling, and others.¹⁵ Change in triglycerides is our primary end point for lipid AMEs because sustained effects on triglycerides have been noted for β -blockers and thiazides, and elevated triglycerides are a determinant of metabolic syndrome, and a modifiable risk factor for coronary disease.

Atenolol and hydrochlorothiazide (HCTZ) were specifically selected for several reasons. They are the most commonly used antihypertensive drugs within their respective classes, with each drug prescribed >40 million times annually in the United States. Given their widespread use, resulting data would potentially be of high clinical value. Both drugs are also dosed once daily, which is documented to enhance adherence to therapy.¹⁶ Finally, these drugs were chosen because of the relative lack of genetic influence on their pharmacokinetics, thus reducing confounding effects of pharmacokinetic variability. Specifically, both drugs are primarily eliminated by the kidneys and thus not influenced by genetic variation in drug-metabolizing enzymes, as are other drugs, including other β -blockers. This trial was proposed and initiated before the publication of the Anglo-Scandinavian Cardiac Outcomes Trial (ASCOT) trial data,¹⁷ which has called into question the role of atenolol in hypertension management. Nonetheless, atenolol remains a widely used drug, and even if its use falls out of favor over the next decade, pharmacogenetic data on a variety of β -blockers suggest findings are consistent across the drug class. Thus, pharmacogenetic findings with atenolol from this study are likely to be applicable to other β -blockers used in hypertension.

PEAR study design

Study population

Males or females (N = 800) with mild to moderate essential hypertension, of any race or ethnicity, between the ages of 17 and 65 are being recruited to participate. Subjects are being enrolled at the University of Florida (Gainesville, FL), Emory University (Atlanta, GA), and the Mayo Clinic (Rochester, MN). In Gainesville, subjects are recruited from Department of Community Health and Family Medicine clinics, which are primary care clinics. In Atlanta, subjects are recruited through outpatient medical clinics at Grady Memorial Hospital, the Hypertension and Renal Diseases Research Center at Emory University, advertisements in public media, and through mailings to

Table I. PEAR inclusion and exclusion criteria**Inclusion**

- Age 17-65 y
- Average* home DBP >85 mm Hg and office DBP >90 mm Hg

Exclusion

- Office or average* home DBP >110 mm Hg
- Office or average* home SBP >180 mm Hg
- Secondary forms of hypertension (including sleep apnea)
- Treatment with 3 or more antihypertensive drugs
- Screening office SBP >170 mm Hg during antihypertensive treatment
- Isolated systolic hypertension
- Concomitant diseases treated with BP-lowering medications
- Heart rate <55 beat/min (in the absence of β -blocker therapy)
- Known cardiovascular disease (including history of angina pectoris, heart failure, cardiac pacemaker, myocardial infarction, revascularization procedure, stroke or transient ischemic attack),
- Diabetes mellitus (type 1 or 2) or screening fasting blood glucose >126 mg/dL
- Serum creatinine >1.5 mg/dL in males and 1.4 mg/dL in females
- Primary renal disease
- Pregnancy or lactation
- History of Raynaud syndrome
- Chronic treatment with BP-elevating drugs (including nonsteroidal anti-inflammatory drugs, COX-2 inhibitors, oral contraceptives)
- Drug or alcohol use likely to affect study protocol adherence
- Upper arm circumference \geq 42 cm (due to limits with the home BP monitor cuff)
- Abnormal liver enzymes (AST, ALT or alkaline phosphatase >2.5 time the upper limit of normal)

AST, Aspartate aminotransferase; ALT, alanine aminotransferase.

* Average home BP in week before visit.

registered voters. In Rochester, subjects are recruited from a list of all residents of Olmsted County seen by a health care provider in the previous 3 years who have a diagnosis of hypertension. Thus, study participants at all 3 sites are drawn almost exclusively from the primary care setting. The study has been approved the institutional review boards at each institution, and all subjects provide informed, written consent before being screened for participation. Information collected on participants' race and ethnicity are self-defined and collected according to the guidelines set forth by the NIH.

Potential subjects are those with newly diagnosed, untreated, or known hypertension currently treated with 1 or 2 antihypertensive drugs. Inclusion and exclusion criteria are shown in Table I. Subjects not meeting any exclusion criteria are further screened for BP inclusion, based on untreated home and office BP. Subjects undergo training by research personnel on the use of the home BP monitor and are provided a monitor and appropriately sized cuff to take home. Those currently treated have their antihypertensive drug therapy tapered (as necessary) and discontinued, with a minimum antihypertensive-free period of 18 days and a preferred washout period of 4 to 6 weeks.

BP inclusion

During the entire study, participants are requested to take their home BP twice daily, on rising from bed and

before retiring. After at least 18 antihypertensive drug-free days, they are screened for inclusion based on both home and office BP data. The BP inclusion requires an average (previous week) seated home diastolic BP (DBP) >85 mm Hg and an average seated (>5 minutes) office DBP >90 mm Hg. Subjects are excluded if by either method DBP is >110 mm Hg or systolic BP (SBP) is >180 mm Hg.

Study protocol

The study protocol (Figure 1) is initiated in subjects who meet all eligibility criteria for the study.

Baseline studies

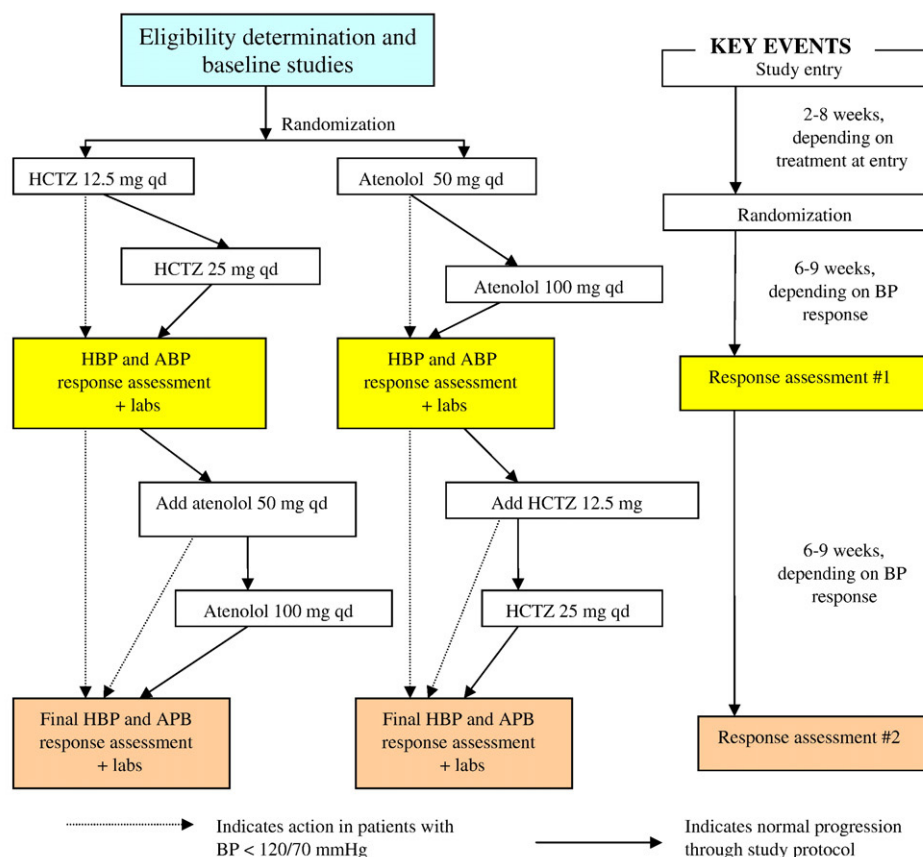
Data collected at various study visits are shown in Table II.

Subjects meeting eligibility criteria undergo baseline collection of home and 24-hour ABP data. For ABP monitoring, subjects report to clinic for ABP monitor placement then return to usual daily activities. They return to clinic 24 hours after ABP placement. Biological samples are collected in the fasting state and include plasma, serum, buffy coat, and a spot urine (unpreserved and preserved with ascorbic acid) in sufficient quantities to meet the study aims and to support future research. Laboratory parameters determined in all subjects (from plasma or serum, as appropriate) for primary study analyses include glucose, insulin, total cholesterol, low density lipoprotein (LDL) cholesterol, high density lipoprotein (HDL) cholesterol, triglycerides, sodium, potassium, magnesium, creatinine, and uric acid. There are no primary planned analyses for urine samples; they are collected to facilitate future research.

Treatment phase

After completion of baseline studies, subjects are randomized to hydrochlorothiazide 12.5 mg daily or atenolol 50 mg daily in an unblinded fashion. Given that all study phenotypes are objective in nature and efficacy of the study drugs is well established, it was not felt that blinding was needed. Throughout the protocol, those with an average home or office SBP >120 mm Hg or DBP >70 mm Hg continue to move through the titration protocol, whereas those with BPs \leq 120/70 mm Hg hold at their current treatment step. Subjects return with their home BP data after 3 weeks on the initial dose, and based on BP noted above, they undergo dose titration. They continue on this dose for a minimum of 6 additional weeks, after which they undergo studies to assess their response to the first study drug (response assessment 1). Those with BP \leq 120/70 mm Hg proceed directly to response assessment 1 after at least 6 weeks on the initial dose (Figure 1). Response assessment studies are identical to baseline studies (Table II). In addition, samples are collected at this visit for creation of Epstein-Barr virus transformed lymphocytes to create a permanent source of DNA and support future tissue based studies.

Figure 1



Abbreviations: HCTZ – hydrochlorothiazide, BP – blood pressure, HPB – home BP,

ABP – 24 hour ambulatory BP

The PEAR study protocol.

After completion of response assessment 1, most subjects (ie, those with BP >120/70 mm Hg) have the alternate drug added and continue through the protocol as in the first phase, after which they repeat response assessment studies.

Safety procedures

Data on adverse effects are collected at every study visit and monitored to detect unexpected adverse events. Numerous safety procedures are in place to insure patient safety, particularly during the antihypertensive drug washout period. First, many of the exclusion criteria are designed to exclude those at moderate to high risk. In addition, subjects are encouraged to conduct daily home BP monitoring and to report immediately any readings with SBP >180 mm Hg or DBP >110 mm Hg. Subjects are withdrawn for any average home BP from the previous

week or an office BP of SBP >180 mm Hg or DBP >110 mm Hg and restarted on their previous antihypertensive regimen or referred for care. The protocol also requires moving backward by 1 treatment step for symptomatic hypotension (regardless of BP) or for any SBP <100 mm Hg (regardless of symptoms). Any subject with heart rate (HR) <55 beat/min is precluded from receiving a higher atenolol dose, and in the case of symptomatic bradycardia, the atenolol dose is decreased or the drug is stopped.

Electrolytes are also carefully monitored, with clinical determination at a local laboratory of serum potassium at each visit while a subject is taking hydrochlorothiazide. Study physicians can elect to replace potassium at any value, with protocol mandated prescription of oral potassium chloride 40 mEq daily for any potassium <3.2 mEq/L. Serum potassium is rechecked every 3 to 4 weeks, and potassium chloride doses increased as needed until potassium is normalized.

Table II. Data collection summary by study visit

Visit	Visit name	Clinical labs [*]	Home BP and office BP	ABP	Research labs [†]
1	Screening	X			
2	BP Inclusion screening		X		
3	Baseline studies		X	X	X
4	Response and safety check	X	X		X
5	Response assessment 1	X	X	X	X
6	Response and safety check	X	X		X
7	Response assessment 2		X	X	X

* Clinical labs—for inclusion screening or clinical safety monitoring, measured at local clinical laboratory.

† Research labs—collected for research purposes, measured centrally.

Finally, PEAR has an external Data Safety and Monitoring Board, charged with monitoring safety of the study protocol, along with data quality.

Methods for BP assessment

Home BP assessment

Home BP is determined using the Microlife model 3AC1-PC home BP monitor (Minneapolis, MN), a device that has met the standards of the British Society of Hypertension and the Association for the Advancement of Medical Instrumentation.¹⁸ All BP measurements are taken in triplicate mode, and the monitor averages the values. SBP, DBP, HR, and a date/time stamp are recorded. The BP monitor stores up to 99 measurements, from which data are downloaded via a computer interface. Subjects bring their home BP monitor to each clinic visit, and the study coordinator downloads the data to the computer, using these data to make protocol-driven decisions. In order for the home BP data to be accepted, there must be at least 5 morning and 5 evening readings during the previous 7 days. If insufficient home BP data are recorded, study participants are asked to return when they have sufficient home BP data. Before giving the participant the home BP monitor on their first visit, study coordinators document the accuracy of the home BP monitor against manual measurement, with 6 measurements by home monitor and manual methods. If the 2 methods differ by >8 mm Hg, a different home BP monitor is used.

Office BP assessment

All office BPs are taken using the home BP monitor assigned to the subject, such that any differences in home and office BP can be attributed to the setting and not the device used to take the BP. Office BP is taken in triplicate, after the subject has been seated for at least 5 minutes.

Ambulatory BP assessment

Ambulatory BP monitoring is performed using Spacelabs (Redmond, WA) model 90207, which has also met the standards for accuracy of the British Society of Hypertension and the Association for the Advancement of Medical Instrumentation.¹⁸

The ABP monitor is preprogramed to randomly record BPs 4 times hourly during the daytime or active hours (eg, 0600 to 2200) and twice hourly during the nighttime or inactive hours (eg, 2200 to 0600). Times are adjusted appropriately for night workers. A validation procedure similar to the one described for the home BP monitor is applied to the ABP monitor.

Assessing adherence to therapy

To aid adherence and its monitoring, study medication is provided in blister packs, labeled with the day of the week. This serves as a “pillbox” equivalent and aids the patient in remembering whether they took their dose. Participants are instructed to bring their blister packs to study visits, from which a pill count is made. This includes assessment of total number of doses missed and the specific day on which doses are missed in the week before the study visit. Those with poor adherence are provided counseling on improved adherence strategies. Availability of detailed adherence data in the week before the study visit (during which home BP data are being captured) allows for exclusion of subjects with poor adherence (eg, <70%) and/or inclusion of adherence data in analysis models.

Planned genetic analyses

Both candidate gene and genome-wide association analyses will be undertaken. Candidate gene genotyping will be accomplished using the Vascular Disease 50,000 SNP Array (Illumina, San Diego, CA) chip,¹⁹ a cardiovascular gene custom array that includes approximately 2,200 cardiovascular and metabolic-related genes, covered through assay of approximately 50,000 single nucleotide polymorphisms (SNPs) using a tag SNP approach. Genome-wide association genotyping will be accomplished using the Affymetrix 6.0 Array (Affymetrix, Santa Clara, CA). At study inception, we proposed to study 70 biological candidate genes (Table III), along with study of 20,000 genome-spanning putative functional SNPs. Although the arrays described above will provide substantially more data than originally envisioned, our initial analyses will still focus on the original 70 candidate genes and the 20,000 putative functional SNPs.

Given that we have a large number of European Americans and African Americans, this presents certain potential challenges in the analyses. We will deal with these in several ways, including initial analyses that consider the 2 groups separately. If the associations are similar, then the groups will be combined, and the analyses will control for the self-defined race, along with estimates of ancestry, which will be determined based on ancestry informative markers that are contained on both arrays being utilized. More detailed information on this issue, and all other analysis issues, will be contained in the individual manuscripts reporting genetic associations.

Data and sample sharing

Based on conditions of the NIH award, genotype and phenotype data will be deposited upon publication of the

Table III. Candidate genes for antihypertensive and adverse responses to diuretics and β -blockers

Name	HUGO gene symbol	Chromosomal location
Sympathetic nervous system		
β 1-Adrenergic receptor	<i>ADRB1</i>	10q24-q26
β 2-Adrenergic receptor	<i>ADRB2</i>	5q32-q34
α 1A-adrenergic receptor	<i>ADRA1A</i>	8p21
α 1B-adrenergic receptor	<i>ADRA1B</i>	5q33
α 2A-adrenergic receptor	<i>ADRA2A</i>	10q24.q26
α 2B-adrenergic receptor	<i>ADRA2B</i>	2
α 2C-adrenergic receptor	<i>ADRA2C</i>	4p16.1
Dopamine receptor, D1	<i>DRD1</i>	5q35.1
G protein α_s	<i>GNAS1</i>	20q13.2
Phosphodiesterase III	<i>PDE3A</i>	12p12
Adenylate cyclase 5	<i>ADCY5</i>	3q13.2-g21
Adenylate cyclase 6	<i>ADCY6</i>	12q12-g13
β -adrenergic receptor kinase 1 (GRK2)	<i>ADRBK1</i>	11cen-g13
G protein coupled receptor kinase 5 (GRK5)	<i>GPRK5</i>	10q24-gter
G protein coupled receptor kinase 4 (GRK4)	<i>GPR2L</i>	4p16.3
β -arrestin 1	<i>ARRB1</i>	11q13
Dopamine β -hydroxylase	<i>DBH</i>	9q34
Catechol-O-methyltransferase	<i>COMT</i>	22q11.2
Monoamine oxidase A	<i>MAOA</i>	Xp11.23
Renin-Angiotensin-Aldosterone system		
Angiotensinogen	<i>AGT</i>	1q42-43
Renin	<i>REN</i>	1q32
Angiotensin-converting enzyme	<i>ACE</i>	17q23
Angiotensin II receptor, type 1	<i>AGTR1</i>	3q21-q25
Aldosterone synthase	<i>CYP11B2</i>	8q21
Aldosterone receptor	<i>NR3C2</i>	4q31.1
11 β -Hydroxysteroid dehydrogenase	<i>HSD11B2</i>	16q22
Natriuretic peptides/receptors		
Atrial natriuretic peptide	<i>NPPA</i>	1p36.2
Natriuretic peptide receptor A	<i>NPR1</i>	1q21-q22
Brain natriuretic peptide	<i>NPPB</i>	1p36.2
Endothelial systems		
Nitric oxide synthase, endothelial	<i>NOS3</i>	7q36
Endothelin-1	<i>EDN1</i>	6p24-p23
Endothelin-2	<i>EDN2</i>	1p34
Endothelin receptor A	<i>EDNRA</i>	4
Endothelin receptor B	<i>EDNRB</i>	13q22
Sodium transport systems		
Na ⁺ -H ⁺ antiporter, amiloride-sensitive	<i>SLC9A3</i>	5p15.3
Na ⁺ -K ⁺ -2Cl ⁻ cotransporter, bumetanide-sensitive	<i>SLC12A1</i>	15q15-q21.1
Na ⁺ -Cl ⁻ cotransporter, thiazide-sensitive	<i>SLC12A3</i>	16q13
Epithelial sodium channel		
α -Subunit	<i>SCNN1A</i>	12p13
β -Subunit	<i>SCNN1B</i>	16p13-p12
γ -subunit	<i>SCNN1G</i>	16p13-p12
NEDD4	<i>NEDD4L</i>	15q
α -Adducin	<i>ADD1</i>	4p16.3
β -Adducin	<i>ADD2</i>	2p14-p13
γ 1-Adducin	<i>ADD3</i>	1-q24.2-q24.3
G protein β_3 -subunit	<i>GNB3</i>	12p13
Ion regulation systems		
Sarcoendoplasmic	<i>ATP2A2</i>	12q23-q24.1

Table III (continued)

Name	HUGO gene symbol	Chromosomal location
reticulum calcium ATPase		
Ryanodine receptor 2, cardiac	<i>RYR2</i>	1q42.1-q43
L type calcium channel α 1c subunit	<i>CACNA1C</i>	12p13.3
Calcium channel β 1 subunit	<i>CACNB2</i>	10p12
Ca-activated K channel β 1	<i>KCNMB1</i>	5q34
Potassium inwardly rectifying channel	<i>KCNJ1</i>	11q24
Chloride channel, kidney, B	<i>CLCNKB</i>	1p36
Protein kinase, lysine deficient 1	<i>PRKWINK1</i>	12p13
Protein kinase, lysine deficient 4	<i>PRKWINK4</i>	17q21-g22
Glucose and lipid regulation		
Peroxisome proliferative activated receptor	<i>PPARG</i>	3p25
ATP-binding cassette, C8	<i>ABCC8</i>	11p15.1
Transcription factor 1, hepatic; albumin proximal factor	<i>TCF1</i>	12q24.2
Hepatocyte nuclear factor 4, alpha	<i>HNF4A</i>	20q12-g13.1
Uncoupling protein 2	<i>UCP2</i>	11q13
Calpain 10	<i>CAPN10</i>	2q37.3
Hepatic lipase	<i>LIPC</i>	15 q21-q23
B3-adrenergic receptor	<i>ADRB3</i>	8p12-p11.2
Glucagon receptor	<i>GCGR</i>	17q25
Cholesteryl ester transfer protein	<i>CETP</i>	16q21
Apolipoprotein E	<i>APOE</i>	19q13.2
Lipoprotein lipase	<i>LPL</i>	8p22
Lecithin-cholesterol acyltransferase	<i>LCAT</i>	16g22.1
Paraoxonase 1	<i>PON1</i>	7q21.3
Paraoxonase 2	<i>PON2</i>	7q21.3
LDL receptor	<i>LDLR</i>	19p13.2

data in a database accessible to scientists. Primary phenotype and genotype data deposits will be made to PharmGKB (www.pharmgkb.org). High-throughput genotype data sets will be deposited in dbGaP (<http://www.ncbi.nlm.nih.gov/sites/entrez?db=gap>) with appropriate links and meta-data in PharmGKB. In addition, there is a sample sharing plan for biological samples, including DNA, cell lines, plasma, serum, and urine, under which investigators may submit an ancillary proposal to the PEAR steering committee to conduct analyses in collaboration with PEAR investigators.

Funding and trial registration

PEAR is funded by the NIH (U01 GM074492). It is registered at ClinicalTrials.gov, #NCT00246519; URL: <http://clinicaltrials.gov/ct2/show/NCT00246519>. The authors are solely responsible for the design and conduct of this study, all study analyses, the drafting and editing of the manuscript, and its final contents.

Results

Baseline demographic characteristics of the first 418 subjects to complete the PEAR protocol are shown in Table IV. These data reveal the subjects are, on average, middle aged and obese (body mass index = 31). Figure 2

Table IV. Baseline demographics* for initial 418 completed PEAR participants

Patients (n = 418)	
Age	50.1 (8.8)
Sex (% female)	56.5
Race (%)	
White, European American	56.7
Black, African American	40.0
Asian	1.2
Other/Multiracial	2.1
Duration of hypertension (y)	8.1 (7.7)
Family history of hypertension† (%)	78.7
Never taken an antihypertensive drug (%)	10.5
Taking antihypertensive drug at entry (%)	84.8
Smoking status	
Current smoker (%)	10.9
No. of cigarettes per day	13.6 (9.6)
Ex-smoker (%)	23.1
BMI (kg/m ²)	31.0 (5.7)
Waist circumference (cm)	98.2 (13.0)
Hip circumference (cm)	111.3 (12.3)

BMI, Body mass index.

* Mean ± SD unless otherwise noted.

† Family history of hypertension defined as hypertension in a parent or sibling.

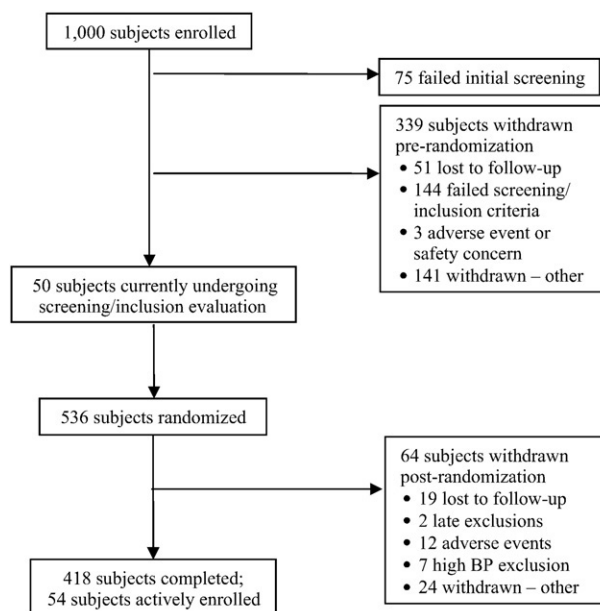
displays the progression of the first 1,000 subjects enrolled in PEAR. It shows that a high percentage of subjects (>40%) cannot be randomized into the trial, with failure to meet inclusion/exclusion criteria as the major reason. Before randomization, 3 (0.3%) subjects were excluded for an adverse event or safety concern, and in no case was the adverse event definitely attributed to study participation. After randomization 7 (1.3%) subjects were excluded from further participation either because their BP exceeded protocol safety limits or the patient was uncomfortable about their BP level. These data highlight the safety of the protocol.

Based on pill counts, 83.4% and 86.6% of subjects were 100% adherent at the time of response assessment to monotherapy and combination therapy, respectively. Focusing on adherence in the 7 days before response assessments, 93.3% of subjects missed no doses, 4.8% missed 1 dose, and 1.9% missed 2 or more doses. The dose immediately before the response assessment visit was missed by 2.2% of subjects.

Discussion

We describe the study design for the PEAR study, which is funded as part of the NIH Pharmacogenetics Research Network. The primary objective of PEAR is to evaluate the genetic determinants of the BP and adverse metabolic responses to β -blockers and thiazide diuretics, with the long-term goal of potentially being able to utilize such information to help guide selection of the most appropriate antihypertensive drug for an individual patient.

The study population consists of uncomplicated hypertensive subjects, where uncomplicated means they

Figure 2

Progression of first 1,000 subjects enrolled in PEAR.

have no concomitant diseases that influence their initial antihypertensive therapy. Empiric therapy of hypertension is primarily with the uncomplicated hypertensive patient; thus, this is the setting where pharmacogenetics may be of greatest clinical value. Other reasons for the focus on a sample of uncomplicated hypertensives is that it is a group with relatively fewer confounding variables (eg, concomitant disease states) and the group for whom temporary washout of antihypertensive therapy is most likely to be safe. The data to date support this is a group in whom antihypertensive drugs can be safely withdrawn for several weeks.

In summary, PEAR will be unique as a hypertension pharmacogenetics study due to its focus not only on genetic associations of BP response but also on adverse metabolic responses to these drugs.

References

1. AHA. Heart disease and stroke statistics—2008 update. Dallas (Tex): American Heart Association; 2008.
2. Chobanian AV, Bakris GL, Black HR, et al. The Seventh Report of the Joint National Committee on Prevention, Detection, Evaluation, and Treatment of High Blood Pressure: the JNC 7 Report. *JAMA* 2003; 289:2560-71.
3. Cutler JA, Davis BR. Thiazide-type diuretics and beta-adrenergic blockers as first-line drug treatments for hypertension. *Circulation* 2008;117:2691-704 [discussion 2705].
4. Messerli FH, Bangalore S, Julius S. Risk/Benefit assessment of beta-blockers and diuretics precludes their use for first-line therapy in hypertension. *Circulation* 2008;117:2706-15 [discussion 2715].

5. Ma J, Stafford RS. Screening, treatment, and control of hypertension in US private physician offices, 2003-2004. *Hypertension* 2008;51:1275-81.
6. Materson BJ. Variability in response to antihypertensive drug treatment. *Hypertension* 2004;43:1166-7.
7. Clement DL, De Buyzere ML, De Bacquer DA, et al. Prognostic value of ambulatory blood-pressure recordings in patients with treated hypertension. *N Engl J Med* 2003;348:2407-15.
8. Ohkubo T, Imai Y, Tsuji I, et al. Home blood pressure measurement has a stronger predictive power for mortality than does screening blood pressure measurement: a population-based observation in Ohasama, Japan. *J Hypertens* 1998;16:971-5.
9. Stergiou GS, Baibas NM, Gantzarou AP, et al. Reproducibility of home, ambulatory, and clinic blood pressure: implications for the design of trials for the assessment of antihypertensive drug efficacy. *Am J Hypertens* 2002;15(2 Pt 1):101-4.
10. Beitelshes AL, Zineh I, Yarandi HN, et al. Discordant beta-blocker effects on clinic, ambulatory, resting, and exercise hemodynamics in patients with hypertension. *Pharmacotherapy* 2006;26:1247-54.
11. Finkelstein JD, Schwartz GL, Chapman AB, et al. Lack of agreement between office and ambulatory blood pressure responses to hydrochlorothiazide. *Am J Hypertens* 2005;18:398-402.
12. Stergiou GS, Efstathiou SP, Skeva, et al. Assessment of drug effects on blood pressure and pulse pressure using clinic, home and ambulatory measurements. *J Hum Hypertens* 2002;16:729-35.
13. Mancia G, Omboni S, Parati G, et al. Lack of placebo effect on ambulatory blood pressure. *Am J Hypertens* 1995;8:311-5.
14. Imai Y, Ohkubo T, Hozawa A, et al. Usefulness of home blood pressure measurements in assessing the effect of treatment in a single-blind placebo-controlled open trial. *J Hypertens* 2001;19:179-85.
15. Garcia-Estevez DA, Araujo-Vilar D, Fiestras-Janeiro G, et al. Comparison of several insulin sensitivity indices derived from basal plasma insulin and glucose levels with minimal model indices. *Horm Metab Res* 2003;35:13-7.
16. Schroeder K, Fahey T, Ebrahim S. How can we improve adherence to blood pressure-lowering medication in ambulatory care? Systematic review of randomized controlled trials. *Arch Intern Med* 2004;164:722-32.
17. Dahlof B, Sever PS, Poulter NR, et al. Prevention of cardiovascular events with an antihypertensive regimen of amlodipine adding perindopril as required versus atenolol adding bendroflumethiazide as required, in the Anglo-Scandinavian Cardiac Outcomes Trial-Blood Pressure Lowering Arm (ASCOT-BPLA): a multicentre randomised controlled trial. *Lancet* 2005;366:895-906.
18. O'Brien E, Waeber B, Parati G, et al. Blood pressure measuring devices: recommendations of the European Society of Hypertension. *BMJ* 2001;322:531-6.
19. Keating BJ, Tischfield S, Murray SS, et al. Concept, design and implementation of a cardiovascular gene-centric 50 k SNP array for large-scale genomic association studies. *PLoS ONE* 2008;3:e3583.